



YOUR DOCK.  
YOUR WAY.

**YOUR 2023**

CASH & CARRY | YOU CHOOSE | YOU LOAD | YOU INSTALL

**WOODARD MARINE** INC.

LAKE BOMOSEN, VT.

 [waterfrontsales@woodardmarine.com](mailto:waterfrontsales@woodardmarine.com)  (802) 265-3690 Ext. 253





**NO TOOLS.  
NO HASSLES.**



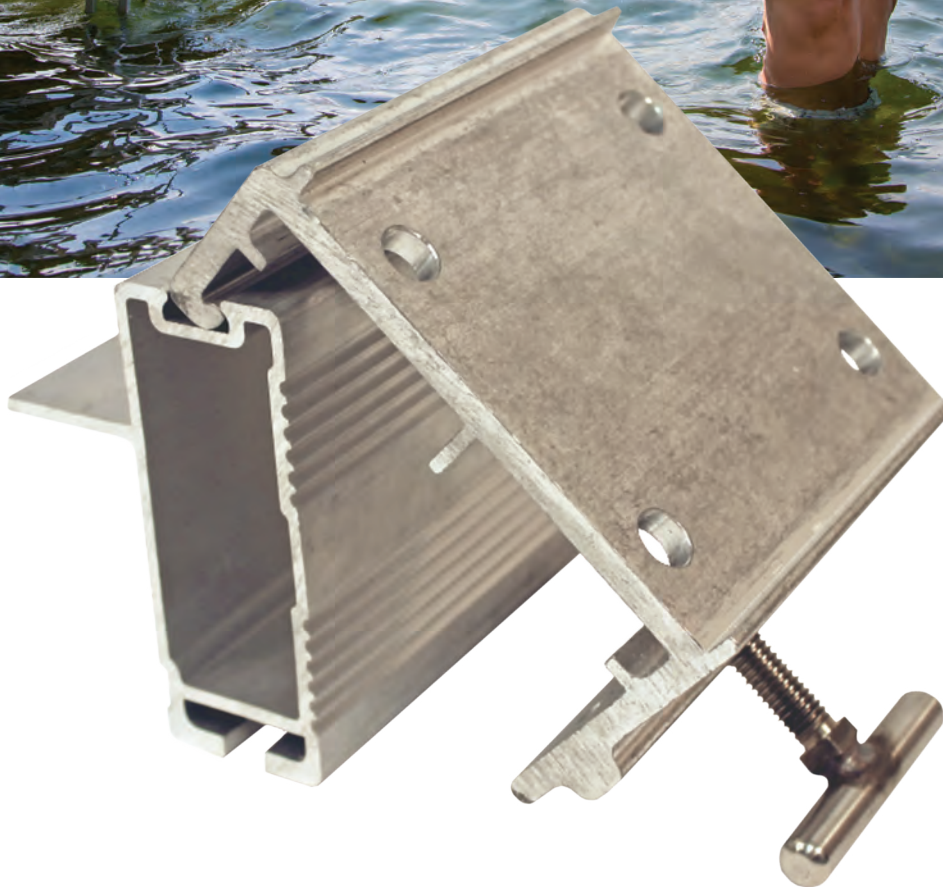
Exclusive  
InfinityTrack™



Easy assembly  
and tool-free  
installation



No holes to drill,  
it couldn't be  
more simple



InfinityTrack®

**THE EASIEST WAY TO CUSTOMIZE YOUR DOCK.**

ShoreMaster's InfinityTrack™ accessory system offers the easiest, most complete way to customize your dock. Offering the most accessories in the industry, as well as tool-free, hassle-free installation, you won't find a more convenient or complete system anywhere.

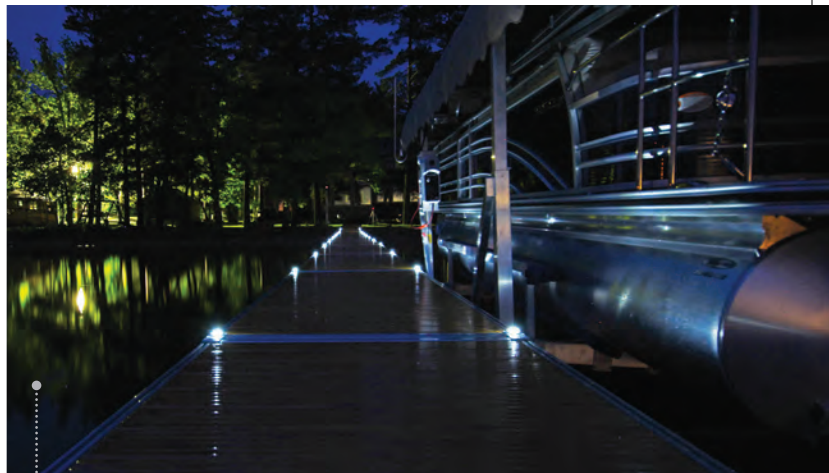
## ULTIMATE CUSTOMIZATION

- Attach anywhere along the perimeter of the dock
- Reconfigure and rearrange at a moment's notice

## INDUSTRY'S MOST ACCESSORIES

- Premium furniture, dock steps, bumpers and more
- Easily add-on, update and reconfigure your dock system

# THE INDUSTRY'S MOST DOCK ACCES- SORIES



## DOCK LIGHTS

\$65 / pair

Set your Infinity Dock System aglow in the evening with solar-powered dock lights from ShoreMaster. Mounted directly into the dock leg cap, our Dock Lights are easy to install and offer an attractive and discreet low profile. No tripping, no wasted dock space. A bright solar-powered LED light provides an evening illumination without the hassle of cords or wires.

## WATERSPORTS RACK

Get back on the water faster with the Watersports Rack. Store your paddleboard, kayak, or canoe off your dock for easy storage and access to all your watersports accessories. Choose between a single or double rack and attach anywhere along the perimeter of your dock to accommodate your setup and needs.

\$404

Single Rack  
w/ Brackets

\$234

Dual Arm Stem



## DUAL S.U.P RACK

\$670

RS4 SUP Rack  
w/ Brackets

\$689

TS9 SUP Rack  
w/ Brackets

Maximize your time on the water by securely storing your paddleboards on the dock. Our Stand-Up Paddle Board Rack includes integrated bungee holes for easy buckling and strapping and fast, secure paddle board storage.



## LADDERS & STEPS

Get in and out of the water quickly with ShoreMaster's Pivoting Ladders and Dock Steps. Utilizing the InfinityTrack accessory system, our ladder and dock steps can be mounted anywhere along the dock frame to accommodate your dock and slip setup. A vertical pivoting action and locking pin allow you to flip the ladder up when you're not using it. At the same time, standard handrails on the steps provide safe, stable usage and entry. All-aluminum construction means hassle-free ownership.



### LADDER

**\$530**

RS4 or TS9

**4 step** stair with quick brackets

**\$683**

RS4 or TS9

**5 step** stair with quick brackets



### PIVOTING QUICK STEP

Stairway Opening Width - 33.75"  
Overall Width - 41"  
Step Tread Depth - 7.125"

**\$1,862**

RS4 or TS9

**4 step** stair with quick brackets

**\$2,195**

RS4 or TS9

**6 step** stair with quick brackets



### STAIRS

4 step adjusts from 32" - 44"  
6 Step adjusts from 45" - 57"  
(lake bottom to top of dock)

**\$931**

RS4 or TS9

**4 step** stair with handrail and quick brackets

**\$1,140**

RS4 or TS9

**6 step** stair with handrail and quick brackets

# CHOOSE FROM THE INDUSTRY'S MOST DECKING OPTIONS

**\$257 / 4'x2'**

4' Wide

**\$383/6'x2'**

6' Wide

**\$257 / 4'x2'**

4' Wide

**\$383 / 6'x2'**

6' Wide

**\$178 / 4'x2'**

4' Wide

**\$128 / 4'x2'**

4' Wide

**\$236 / 6'x2'**

6' Wide

## OAK ALUMINUM WOODGRAIN

Get the beauty of wood without the maintenance, with our Traditional Woodgrain aluminum decking. Powder-coated using an Italian process for a premium, real wood look, our woodgrain aluminum decking gives you a timeless look year after year. Plus, aluminum decking is lighter weight and more substantial than natural wood. It won't rot, twist, warp, or decay, so you'll enjoy maintenance-free, slip-resistant decking that is as comfortable and easy to own as it is beautiful.



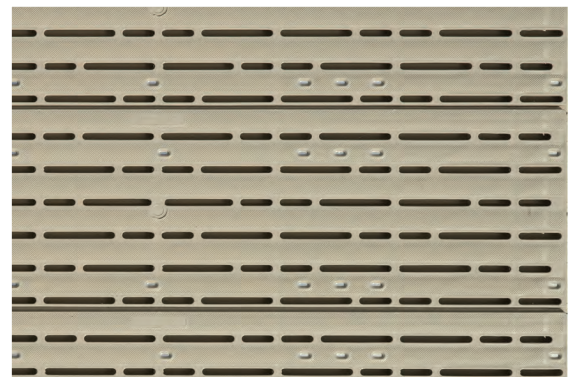
## GRAY ALUMINUM WOODGRAIN

Woodgrain is now available in Gray Oak, for a genuinely unique dock system. Aluminum woodgrain decking offers the beauty of wood without the seasonal maintenance. We utilize an Italian process to apply the powder-coat for a premium, real wood look that will hold up at even the busiest cabins. Plus, aluminum is lighter and stronger than natural wood. It won't rot, twist, warp, or decay, so you'll enjoy maintenance-free, slip-resistant decking that is as easy as it is beautiful.



## GLACIER™ POLY FLOW-THROUGH

ShoreMaster's Glacier™ decking features an open flow-through design allowing water, dirt, and debris to easily pass through the deck panels. It dries faster and stays clean longer. ShoreMaster Glacier decking offering a slip-resistant surface that is easy on your feet so you can safely and comfortably enjoy your dock time. Plus, its low-maintenance polypropylene composition means your decking won't rot, twist or decay, and you'll enjoy hassle-free ownership season-after-season.



## CEDAR (OUR MOST POPULAR DECKING)

ShoreMaster's natural cedar wood decking provides a cost-effective, real wood option for decking your dock system. Plus, nothing feels better on your bare feet than the soft, natural beauty of cedar decking. Requiring minimal, seasonal maintenance cedar wood decking provides a natural aesthetic that will look great for seasons to come.



# A DOCK SYSTEM DESIGNED TO WORK **FOR YOU**

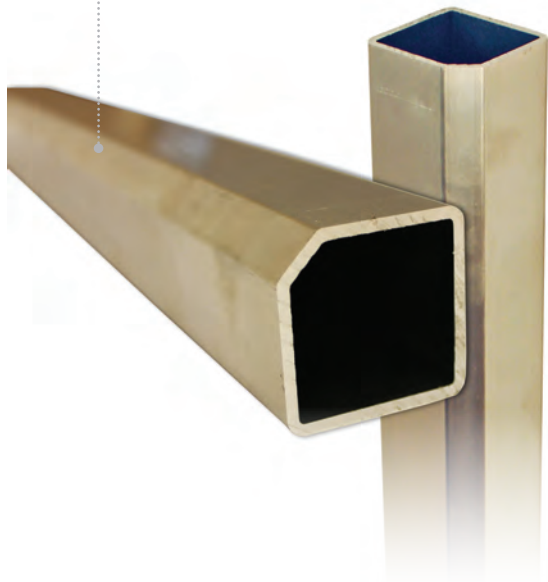


INFINITY RS4

INFINITY TS9

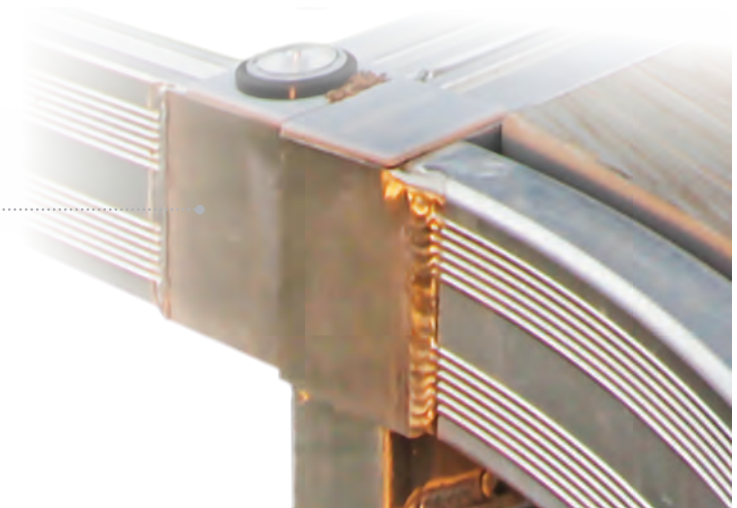
## 5-SIDED DOCK LEG & 18" LEG POCKET

5-Sided Dock legs provide three points of contact (versus two points offered by most other systems) for superior stability and performance. 18" leg pockets allow for maximum adaptability to fluctuating water levels as well as providing unmatched stability and the ability for dock legs to sit flush with the dock surface for an unobstructed dock system.



## INFINITY FRAME CONNECTIONS

All Infinity dock models feature the Infinity Dock Connection System, which allows for dock sections to be connected together anywhere along the dock's perimeter using a simple connection bracket and T-handle. Initial installation and seasonal reconfigurability are quick, easy, and hassle-free.



## PRECISION WELDED CONSTRUCTION

Lightweight aluminum welded construction all provide for the quick, easy installation of your sectional dock system. The Infinity Dock System was developed to be the most versatile, durable, and user-friendly system on the market.

	INFINITY RS4	INFINITY TS9
<b>SIDE FRAME STYLE</b>	Boxed Rail	Truss
<b>SIDE HEIGHT</b>	4"	9"
<b>DOCK STYLE</b>	Sectional	Sectional or Wheel-in
<b>SECTION ATTACHMENTS</b>	Infinity Connection System	Infinity Connection System
<b>LEG STYLE</b>	5-Sided Dock Leg	5-Sided Dock leg
<b>LEG POCKET HEIGHT</b>	18"	18"
<b>FRAME SIZES</b>	4'x4' (52lb) 4'x10' (82lb) 4'x12' (97lb)	4'x8' (61lb) 4'x16' (102lb) 6'x8' (77lb) 6'x16' (125lb)
<b>DECKING STYLE</b>	Recessed Removable	Recessed Removable
<b>DECKING OPTIONS</b>	Yes	Yes



# INFIINTY RS4

## THE ULTIMATE DOCK EXPERIENCE

Medium Duty.

Available in: 4"x4" | 4'x10' | 4'x12'

### 4'X10' FREESTANDING

- Frame RS4 4' x 10'
- Cedar Decking (5 sections of 2' x 4' boards)
- 1 Leg in bulk 20' Length (customer cut to desired length)
- 4 Leg Pockets (for a freestanding dock)
- 4 Stability Brace / Cross Supports
- 4 Foot Pads
- 2 Dock-to-dock connectors

### 4'X10' ADD-ONS

- Frame RS4 4' x 10'
- Cedar Decking (5 sections of 2' x 4' boards)
- 1 Leg in bulk 20' Length (customer cut to desired length)
- 2 Leg Pockets (for a freestanding dock)
- 2 Stability Brace / Cross Supports
- 2 Foot Pads
- 2 Dock-to-dock connectors

**\$2,252**

**Free Standing  
Bundled Cash and Carry**

**\$1,946**

**Add-on Section  
Bundled Cash and Carry**

(Plus tax / delivery / install) \* add \$597 upgrade to 4'x12' or Save \$597 for a 4' x 4'. Upgrade to Flow Decking add \$250. Upgrade to Aluminum Oak Decking add \$645.

### PREMIUM STABILITY

- 4" Rail Side
- Precision Welded All-Aluminum Construction
- 5-Sided Dock Leg and 1 8" Leg Pocket
- Double Leg Bracing

### TOTAL CUSTOMIZATION

- Exclusive IninityTrack™ Dock Accessory System
- Decking Options

### EASY INSTALLATION

- Infinity Frame Connection System
- Removable Decking Panel







# INFIINTY TS9

**CLASSIC TRUSS DESIGN.  
SUPERIOR STABILITY.**

**Heavy Duty.**  
Available in: 4"x8" | 4'x16' | 6'x8' | 6'x16'

## FREESTANDING:

- Frame TS9 Frame Size of choice
- Cedar Decking
- 1 Leg in bulk 20' Length (customer cut to desired length)
- 4 Leg Pockets (for a freestanding dock)
- 4 Stability Brace / Cross Supports
- 4 Foot Pads
- 2 Dock to Dock Connectors

## ADD-ONS:

- Frame TS9 Frame Size of choice
- Cedar Decking
- 1 Leg in bulk 20' Length
- 2 Leg Pockets (for a freestanding dock)
- 2 Stability Brace / Cross Supports
- 2 Foot Pads

**4' WIDE FREE STANDING BUNDLED CASH AND CARRY\***

**\$2,175**

**4' x 8' Bundle**

(Plus tax / install) 4' x 8' Upgrade to Flow Decking Add \$75

**\$3,325**

**4' x 16' Bundle**

(Plus tax / install) 4' x 8' Upgrade to Aluminum Oak Decking Add \$382

**6' WIDE FREE STANDING BUNDLED CASH AND CARRY\***

**\$3,165**

**6' x 8' Bundle**

(Plus tax / install) 6' x 8' Upgrade to Flow Decking NOT Available

**\$4,042**

**6' x 16' Bundle**

(Plus tax / install) 6' x 8' Upgrade to Aluminum Oak Decking Add \$544

\* Just need an add on section.  
Save \$300 per 8' section and save \$330 per 16' section compared to freestanding pricing.

## STRENGTH + STABILITY

- Classic 9" Truss Side
- Precision Welded All- Aluminum Construction
- 5-Sided Dock Leg and 1 8" Leg Pocket
- Premium Flotation System

## FORM & FUNCTION

- Available as sectional, wheel-in and floating dock system
- Adaptable to deep water levels

## EASY INSTALLATION

- Infinity Frame Connection System
- Removable Decking Panel



Optional Wheel kit Available

IN-STOCK

# DOCK ACCESSORIES

TO MAKE YOUR DOCK SYSTEM WORK FOR YOU



## UMBRELLA HOLDER

**\$112**

RS4/TS9  
Quick Connect

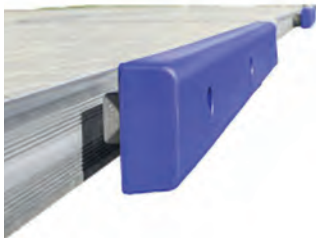
## CORNER FRAME (CEDAR DECKING)

**\$470**

RS4  
Flow Decking  
Add \$114

**\$517**

TS9  
Aluminum Decking  
Add \$115



## HORIZONTAL BUMPER

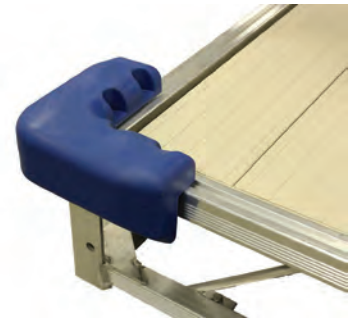
**\$304**

Tan, Grey, White,  
Blue, Black

## CORNER BUMPER

**\$50**

Tan, Grey, White,  
Blue, Black



## VERTICAL BUMPER

**\$284**

Tan, Grey, White,  
Blue, Black



## WATERCRAFT ENTRY ASSISTANT

**\$372**

2' with Quick  
Connect Bracket



## DOCK CLEAT

**\$35 per**

No Drilling,  
Self Install





**HANDRAIL**  
(W/ QUICK CONNECT BRACKETS)

- \$333**

4'
- \$372**

6'
- \$505**

8'
- \$583**

10'

**WHEEL KITS**  
(2 WHEELS W/ LEG CONVERSIONS)

- \$862**

Shallow Water  
37" - 57"
- \$996**

Standard Water  
48" - 72"
- \$1,214**

Deep Water  
66" - 105"



**RAMPS / ENTRY RAMPS**  
(W/ CEDAR DECKING AND QUICK CONNECT BRACKETS)

- \$745**

4' x 4'
- \$1,376**

4' x 8'
- \$2,032**

6' x 8'

Upgrade To Flow Decking 4'x4' add \$100 or 4'x8' \$300  
 Upgrade To Aluminum Decking 4'x4' add \$258 or 4'x8' \$516  
 Upgrade To Aluminum Decking 6'x8' add \$588



# A LIFT SYSTEM DESIGNED TO WORK **FOR YOU**



**BOAT LIFTS**

**PWC LIFTS**

**PONTOON LIFTS**



## MAKE THE MOST OF YOUR SUMMER MOMENTS WITH SHORESTATION BOAT LIFTS.

Canopy systems and Accessories in stock and pricing available upon request. Please call for pricing and options.



**HYDRAULIC LIFT**



**MANUAL LIFT**



ShoreStation's solar-powered systems harness the sun's energy to power your boat lift, making your lift more cost-effective, efficient and maintenance-free.

### STOCKING BOAT AND PONTOON LIFT MODELS AT WOODARD MARINE

AVAILABLE LIFT CAPACITY	INSIDE WIDTH	PLATFORM LENGTH	LIFT TRAVEL	MINIMUM WATER DEPTH	MAXIMUM WATER DEPTH
<b>4,000 lb. MANUAL</b>	108" / 120"	8' 11"	4'	11"	7' 7"
<b>4,000 lb. HYDRAULIC</b>	108" / 120"	9' 10"	4'	11"	7' 7"
<b>5,000 lb. HYDRAULIC</b>	120"	10' 11"	4'	11"	8' 1"
<b>7,000 lb. HYDRAULIC</b>	120" / 132"	12' 11"	4' 6"	11"	8' 1"

Contact Dealer for pricing, build and installation options.





**DESIGNED TO HANDLE SOME OF TODAY'S LARGEST PERSONAL WATERCRAFT AVAILABLE, OUR LIFTS SUPPORT CRAFTS UP TO 1,500 LBS. GET ON AND OFF THE WATER QUICKLY AND SAFELY.**



### **SHORESTATION VERTICAL**

#### **HYDRAULIC SOLAR POWER**

Our vertical lift design can handle deeper water and your largest Personal Watercraft – up to 5'6" water depth and 1,500 lb. capacity.

- NEW! Now available with ShoreStation's legendary Solar powered Hydraulic lift system
- Comes standard with 2 wireless remote controls for effortless lifting
- "V" cradle design for shallow water operation
- Self-adjusting pivoting UltraBunks safely cradle watercraft's hull
- Hydraulic Solar Powered System



### **LAKESHORE PRODUCTS CANTILEVER**

#### **MANUAL WHEEL DRIVE**

This aluminum constructed cantilever style PWC lift can handle watercrafts up to 1,000 lb.

- 30" operator's wheel and brake winch provides safe, smooth operation
- Heavy-duty aluminum frame and posts for larger watercrafts
- Self-adjusting pivoting UltraBunks cradle watercraft's hull
- Also available with 4 legs for deeper water or optional canopy
- Shallow water applications up to 36" depth



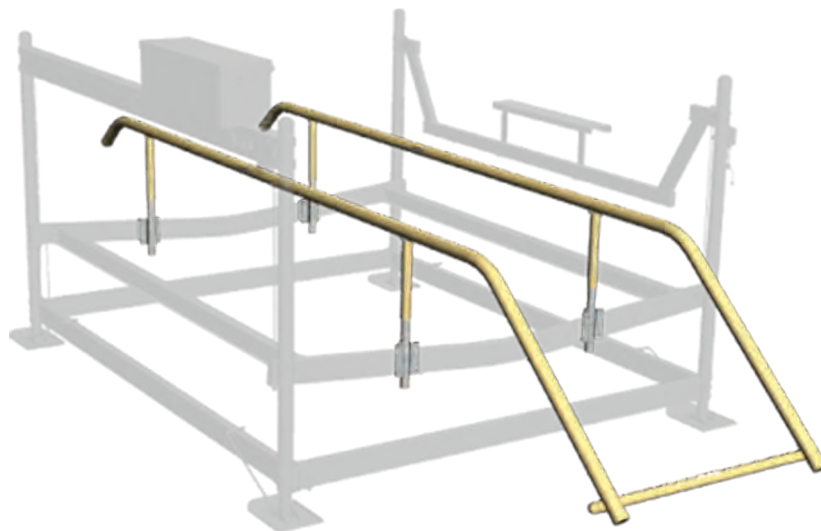
**OTHER LIFT MODELS AVAILABLE IN HYDRAULIC, ELECTRIC AND MANUAL**





# PONTOON LIFTS

**UPDATED TO FIT TODAY'S LARGER AND HEAVIER PONTOONS. OFFERING GREATER SUPPORT WITH THREE CRADLE OPTIONS TO CHOOSE FROM. AVAILABLE IN 3,000 TO 10,000 CAPACITY VERTICAL LIFTS.**



## TOONRAIL

The 3-in-1 under-deck lift support with integrated motor stop and load guides is economical and maintenance free. The contoured poly-covered tubes both guide the pontoon into the lift and support it by simply lifting under the deck inside the outer tubes.

Canopy systems in stock and pricing available upon request.



LIFTS ARE AVAILABLE IN HYDRAULIC AND MANUAL





## FREE DELIVERY

OUR TRUCKS DELIVER CURBSIDE\* TO YOUR SITE

## PICKUP & SAVE

WE WILL PAY YOU TO PICKUP

\*\*\* This discount only applies to customer pick up, does not apply to installation contractor pick up for customer \*\*\*

MINIMUM PURCHASE AMOUNT (Not including sales tax)	FREE DELIVERY FROM 615 CREEK RD. HYDEVILLE, VT 05750 (Distance based on Google Maps)	DELIVERY CHARGE ONE WAY (Over the free mile range)
\$5,000	10 miles	Free
	Over 10+ miles	\$4.00 / mile

Delivery Limited to size of Up to 1 truck/ trailer load per order, additional loads are subject to delivery charge. Deliveries are scheduled for Tuesday each week, between 10am - 3pm, please schedule delivery date. Delivery is for Shoremaster Dock system only, other services and Boat lifts are subject to delivery and installation fees.

MINIMUM PURCHASE AMOUNT (Not including sales tax)	PICKUP APPOINTMENT DISCOUNT
\$2,000	\$50.00
\$4,000	\$100.00
\$6,000	\$150.00
\$8,000	\$200.00
\$10,000	\$400.00

Pick up Tuesday - Saturday 9am - 12 or 2pm - 4pm. Appointment must be scheduled for pick up.

**\* Free Curbside Delivery Terms & Conditions:** 1. Curbside delivery definition: We will back up as close as we can with our vehicle to your installation site and off-load your product. We cannot carry your product further than the side/rear of our truck/trailer, Our delivery vehicles cannot go off of driveway surfaces (ie on grass, etc.). 2. Free delivery available on in stock Products only. Please see chart above for minimum purchase amounts to qualify for free delivery. Free delivery does not apply to Boat Lift or any other woodard marine services and cannot be combined. 3. Boat Lifts, canopies & accessories – delivery, build, and installation prices apply to all boat lift products. 4. If you want your product installed, please inquire on rates for this service – free delivery does not apply. 5. Assembly is not included in any delivery, bulk product supplied. 6. Purchases under \$5,000 are subject to a \$4.00 per mile one way charge from Woodard Marine VT. A ground shipping method/charge by another source such as Common Carrier or UPS may be more feasible depending on product purchased. 7. \*\*Due to regulations for hourly driving restrictions by the Federal Motor Carrier there may be an additional fee applicable to deliveries 200 miles or over for overnight charges.