



YOUR DOCK.  
YOUR WAY.  
**YOUR 2024.**

**CASH & CARRY** (SEE PAGE 16) | **YOU CHOOSE** | **YOU LOAD** | **YOU INSTALL**

**WOODARD MARINE** INC.

LAKE BOMOSEEN, VT.

 [waterfrontsales@woodardmarine.com](mailto:waterfrontsales@woodardmarine.com)

 (802) 265-3690 Ext. 6  Text: (802) 265-3690





**NO TOOLS.  
NO HASSLES.**



Exclusive  
InfinityTrack™



Easy assembly  
and tool-free  
installation



No holes to drill,  
it couldn't be  
more simple

## **ULTIMATE CUSTOMIZATION**

- Attach anywhere along the perimeter of the dock
- Reconfigure and rearrange at a moment's notice

## **INDUSTRY'S MOST ACCESSORIES**

- Premium furniture, dock steps, bumpers and more
- Easily add-on, update and reconfigure your dock system

# InfinityTrack®

## **THE EASIEST WAY TO CUSTOMIZE YOUR DOCK.**

ShoreMaster's InfinityTrack™ accessory system offers the easiest, most complete way to customize your dock. Offering the most accessories in the industry, as well as tool-free, hassle-free installation, you won't find a more convenient or complete system anywhere.

# THE INDUSTRY'S MOST DOCK ACCES- SORIES



## DOCK LIGHTS

**\$92 / pair**

Set your Infinity Dock System aglow in the evening with solar-powered dock lights from ShoreMaster. Mounted directly into the dock leg cap, our Dock Lights are easy to install and offer an attractive and discreet low profile. No tripping, no wasted dock space. A bright solar-powered LED light provides an evening illumination without the hassle of cords or wires.

Blue: 1027435 | Amber: 1027437 | White: 107419

## WATERSPORTS RACK

Get back on the water faster with the Watersports Rack. Store your paddleboard, kayak, or canoe off your dock for easy storage and access to all your watersports accessories. Choose between a single or double rack and attach anywhere along the perimeter of your dock to accommodate your setup and needs.

**\$448**

Single Rack  
w/ Brackets

**\$260**

Dual Arm Stem

RS4: QC 1006706 + single 1016764 + dual 1025157 | TS9: QC 1006730 + single 1016764 + dual 1025157



## DUAL S.U.P RACK

**\$745**

RS4 SUP Rack w/  
Brackets

**\$765**

TS9 SUP Rack  
w/ Brackets

Maximize your time on the water by securely storing your paddleboards on the dock. Our Stand-Up Paddle Board Rack includes integrated bungee holes for easy buckling and strapping and fast, secure paddle board storage.

RS4: QC 1006706 + dual sup 1028024 | TS9: QC 1006730 dual sup 1028024



## LADDERS & STEPS

Get in and out of the water quickly with ShoreMaster's Pivoting Ladders and Dock Steps. Utilizing the InfinityTrack accessory system, our ladder and dock steps can be mounted anywhere along the dock frame to accommodate your dock and slip setup. A vertical pivoting action and locking pin allow you to flip the ladder up when you're not using it. At the same time, standard handrails on the steps provide safe, stable usage and entry. All-aluminum construction means hassle-free ownership.



### LADDER

**\$588**

RS4 or TS9

**4 step** stair with quick brackets

**\$759**

RS4 or TS9

**5 step** stair with quick brackets

4 Step Ladder: 1006670 | 5 Step Ladder: 1006671  
QC Bracket RS4: 1006706 | QC Bracket TS9: 1006730



### PIVOTING QUICK STEP

Stairway Opening Width - 33.75"  
Overall Width - 41"  
Step Tread Depth - 7.125"

**\$2,068**

RS4 or TS9

**4 step** stair with quick brackets

**\$2,438**

RS4 or TS9

**6 step** stair with quick brackets

4 Step quick step: 1026499 + bracket | 6 Step quick step: 1026507  
\*see dealer for quick bracket options



### STAIRS

4 step adjusts from 32" - 44"  
6 Step adjusts from 45" - 57"  
(take bottom to top of dock)

**\$1,034**

RS4 or TS9

**4 step** stair with handrail and quick brackets

**\$1,266**

RS4 or TS9

**6 step** stair with handrail and quick brackets

4 Step Stairs: 1006670 | 5 Step Stairs: 1006671  
QC Bracket RS4: 1006706 | QC Bracket TS9: 1006730

# IN STOCK DECKING OPTIONS

**\$285 / 4'x2'**

**4'Wide**

**\$425 / 6'x2'**

**6'Wide**

4' wide: 1020206 | 6' wide: 1020620

**\$285 / 4'x2'**

**4'Wide**

**\$425 / 6'x2'**

**6'Wide**

4' wide: 1028099 | 6' wide: 1028103

**\$197 / 4'x2'**

**4'Wide**

4' wide: 1028168 | 6' wide: Not Available

**\$128 / 4'x2'**

**4'Wide**

**\$236 / 6'x2'**

**6'Wide**

4' wide: 1018417 | 6' wide: 1020248

## OAK ALUMINUM WOODGRAIN

Get the beauty of wood without the maintenance, with our Traditional Woodgrain aluminum decking. Powder-coated using an Italian process for a premium, real wood look, our woodgrain aluminum decking gives you a timeless look year after year. Plus, aluminum decking is lighter weight and more substantial than natural wood. It won't rot, twist, warp, or decay, so you'll enjoy maintenance-free, slip-resistant decking that is as comfortable and easy to own as it is beautiful.



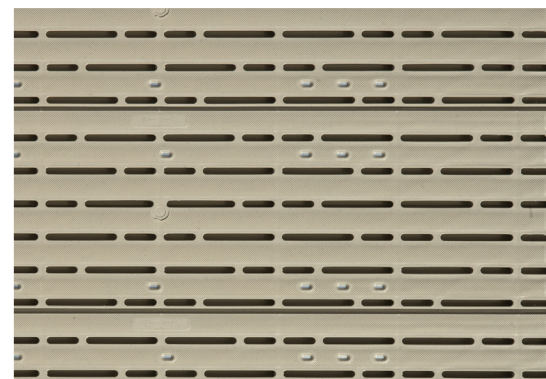
## GRAY ALUMINUM WOODGRAIN

Woodgrain is now available in Gray Oak, for a genuinely unique dock system. Aluminum woodgrain decking offers the beauty of wood without the seasonal maintenance. We utilize an Italian process to apply the powder-coat for a premium, real wood look that will hold up at even the busiest cabins. Plus, aluminum is lighter and stronger than natural wood. It won't rot, twist, warp, or decay, so you'll enjoy maintenance-free, slip-resistant decking that is as easy as it is beautiful.



## TAN POLY FLOW-THROUGH

ShoreMaster's Glacier™ decking features an open flow-through design allowing water, dirt, and debris to easily pass through the deck panels. It dries faster and stays clean longer. ShoreMaster Glacier decking offering a slip-resistant surface that is easy on your feet so you can safely and comfortably enjoy your dock time. Plus, its low-maintenance polypropylene composition means your decking won't rot, twist or decay, and you'll enjoy hassle-free ownership season-after-season.



## CEDAR (OUR MOST POPULAR DECKING)

ShoreMaster's natural cedar wood decking provides a cost-effective, real wood option for decking your dock system. Plus, nothing feels better on your bare feet than the soft, natural beauty of cedar decking. Requiring minimal, seasonal maintenance cedar wood decking provides a natural aesthetic that will look great for seasons to come.



# A DOCK SYSTEM DESIGNED TO WORK **FOR YOU**



INFINITY RS4

INFINITY TS9

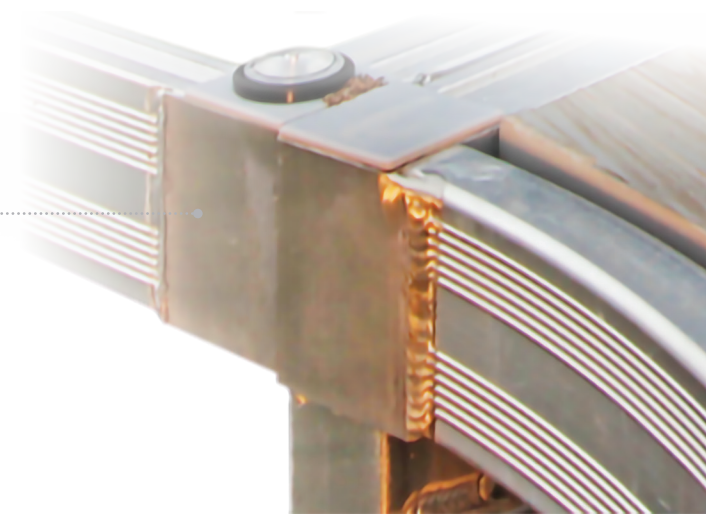
## 5-SIDED DOCK LEG & 18" LEG POCKET

5-Sided Dock legs provide three points of contact (versus two points offered by most other systems) for superior stability and performance. 18" leg pockets allow for maximum adaptability to fluctuating water levels as well as providing unmatched stability and the ability for dock legs to sit flush with the dock surface for an unobstructed dock system.



## INFINITY FRAME CONNECTIONS

All Infinity dock models feature the Infinity Dock Connection System, which allows for dock sections to be connected together anywhere along the dock's perimeter using a simple connection bracket and T-handle. Initial installation and seasonal reconfigurability are quick, easy, and hassle-free.



## PRECISION WELDED CONSTRUCTION

Lightweight aluminum welded construction all provide for the quick, easy installation of your sectional dock system. The Infinity Dock System was developed to be the most versatile, durable, and user-friendly system on the market.

	RS4 MEDIUM DUTY	TS9 HEAVY DUTY
<b>SIDE FRAME STYLE</b>	Boxed Rail	Truss
<b>SIDE HEIGHT</b>	4"	9"
<b>DOCK STYLE</b>	Sectional	Sectional or Wheel-in
<b>SECTION ATTACHMENTS</b>	Infinity Connection System	Infinity Connection System
<b>LEG STYLE</b>	5-Sided Dock Leg	5-Sided Dock leg
<b>LEG POCKET HEIGHT</b>	18"	18"
<b>FRAME SIZES</b>	4'x4' (52lb) 4'x10' (82lb) 4'x12' (97lb)	4'x8' (61lb) 4'x16' (102lb) 6'x8' (77lb) 6'x16' (125lb)
<b>DECKING STYLE</b>	Recessed Removable	Recessed Removable
<b>DECKING OPTIONS</b>	Yes	Yes



# INFIINTY RS4

## THE ULTIMATE DOCK EXPERIENCE

Medium Duty.

Available in: 4"x4" | 4'x10' | 4'x12'

### 4'WIDE FREESTANDING

- Frame RS4 4' x 10' or 4' x 12'
- Cedar Decking
- 1 Leg in bulk 20' Length (customer cut to length)
- 4 Leg Pockets (for a freestanding dock)
- 4 Stability Brace / Cross Supports
- 4 Foot Pads
- 2 Dock-to-dock connectors

### 4'WIDE ADD-ONS

- Frame RS4 4' x 10' or 4' x 12'
- Cedar Decking
- 1 Leg in bulk 20' Length (customer cut to length)
- 2 Leg Pockets (for a freestanding dock)
- 2 Stability Brace / Cross Supports
- 2 Foot Pads
- 2 Dock-to-dock connectors

**\$2,502**

**4' x 10' Free Standing  
Bundled Cash and Carry**

**\$2,162**

**4' x 10' Add-on Section  
Bundled Cash and Carry**

**\$3,165**

**4' x 12' Free Standing  
Bundled Cash and Carry**

**\$2,825**

**4' x 12' Add-on Section  
Bundled Cash and Carry**

### PREMIUM STABILITY

- 4" Rail Side
- Precision Welded All-Aluminum Construction
- 5-Sided Dock Leg and 18" Leg Pocket
- Double Leg Bracing

### TOTAL CUSTOMIZATION

- Exclusive IninityTrack™ Dock Accessory System
- Decking Options

### EASY INSTALLATION

- Infinity Frame Connection System
- Removable Decking Panel



(Plus tax / delivery / install) \* add \$663 upgrade to 4'x12' or Save \$597 for a 4' x 4'. Upgrade to Flow Decking add \$275. Upgrade to Aluminum Oak Decking add \$725.





# INFIINTY TS9

**CLASSIC TRUSS DESIGN.  
SUPERIOR STABILITY.**

**Heavy Duty.**

Available in: 4"x8" | 4'x16' | 6'x8' | 6'x16'

## FREESTANDING:

- Frame TS9 Frame Size of choice
- Cedar Decking
- 1 Leg in bulk 20' Length (customer cut to desired length)
- 4 Leg Pockets (for a freestanding dock)
- 4 Stability Brace / Cross Supports
- 4 Foot Pads
- 2 Dock to Dock Connectors

## ADD-ONS:

- Frame TS9 Frame Size of choice
- Cedar Decking
- 1 Leg in bulk 20' Length
- 2 Leg Pockets (for a freestanding dock)
- 2 Stability Brace / Cross Supports
- 2 Foot Pads

### 4' WIDE FREE STANDING BUNDLED CASH AND CARRY\*

**\$2,416**

**4' x 8' Bundle**

Freestanding (Plus tax / install)

**\$3,695**

**4' x 16' Bundle**

Freestanding (Plus tax / install)

Upgrade 4' wide cedar decking to poly flow thru for \$222 or Aluminum for \$1,146 additional.

### 6' WIDE FREE STANDING BUNDLED CASH AND CARRY\*

**\$3,516**

**6' x 8' Bundle**

Freestanding (Plus tax / install)

**\$4,491**

**6' x 16' Bundle**

Freestanding (Plus tax / install)

Upgrade 6' wide cedar decking to Aluminum for \$1,306 additional.

\* Just need an add on section.

Save \$300 per 8' section and save \$330 per 16' section compared to freestanding pricing.

## STRENGTH + STABILITY

- Classic 9" Truss Side
- Precision Welded All-Aluminum Construction
- 5-Sided Dock Leg and 18" Leg Pocket
- Premium Flotation System

## FORM & FUNCTION

- Available as sectional, wheel-in and floating dock system
- Adaptable to deep water levels

## EASY INSTALLATION

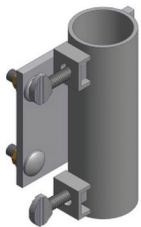
- Infinity Frame Connection System
- Removable Decking Panel



IN-STOCK

# DOCK ACCESSORIES

## TO MAKE YOUR DOCK SYSTEM WORK FOR YOU



### UMBRELLA HOLDER

**\$124**

RS4/TS9  
Quick Connect

1024339 + QC Bracket (see below)

### CORNER FRAME (CEDAR DECKING)

**\$522**

RS4

**\$574**

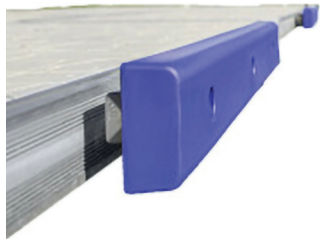
TS9

Upgrade Decking

Flow Decking Add \$126 | Aluminum Decking Add \$135

RS4 corner frame: 1005990 + cedar 1018418

TS9 corner frame: 1005994 + cedar 1018418



### HORIZONTAL BUMPER

**\$337**

Tan, Grey, White,  
Blue, Black

Tan: 1004260 | Blue: 1004259  
Grey: 1030665 | White: 1004258  
Black: 1004261 + 1004265 & 1004186 + qc bracket

### CORNER BUMPER

**\$55**

Tan, Grey, White,  
Blue, Black

Tan: 1004247 | Grey: 1030668  
Blue: 1004249 | Black: 1004246



### VERTICAL BUMPER

**\$315**

Tan, Grey, White,  
Blue, Black



### WATERCRAFT ENTRY ASSISTANT

**\$413**

2' with Quick  
Connect Bracket

Rail: 1026446 + QC Bracket (see below)



### DOCK CLEAT

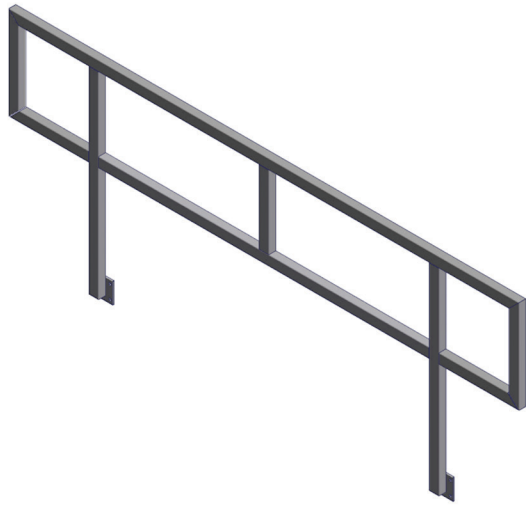
**\$38 per**

No Drilling,  
Self Install

Cleat 1006655



Tan: 1004260 | Blue: 1004259 | Grey: 1030665  
White: 1004258 | Black: 1004261 + 1004265 + qc bracket  
QC Bracket RS4 1006706 TS9 1006730



## HANDRAIL (W/ QUICK CONNECT BRACKETS)

- \$370**  
4'
- \$413**  
6'
- \$561**  
8'
- \$608**  
10'

4': 1006653 | 6': 1006654 | 8': 1006656 | 10': 1006657 (see below for qc bracket details)

## WHEEL KITS (2 WHEELS W/ LEG CONVERSIONS)

- \$957**  
Shallow Water  
37" - 57"
- \$1,106**  
Standard Water  
48" - 72"
- \$1,348**  
Deep Water  
66" - 105"

Shallow kit: 1006682 | Std kit: 1006686 | Deep Kit: 1006681 | Wheel qty 1: 1007829



## RAMPS / ENTRY RAMPS (W/ CEDAR DECKING AND QUICK CONNECT BRACKETS)

- \$827**  
4' x 4'
- \$1,528**  
4' x 8'
- \$2,257**  
6' x 8'

### Ramp Decking Upgrade

- ✓ Upgrade To Flow Decking 4'x4' add \$111
- ✓ Upgrade to Flow Decking 4'x8" \$333
- ✓ Upgrade To Aluminum Decking 4'x4' add \$286
- ✓ Upgrade to Aluminum Decking 4'x8" \$573
- ✓ Upgrade To Aluminum Decking 6'x8' add \$653



Additional options and upgrades available for viewing at [www.shoremaster.com](http://www.shoremaster.com)

# A LIFT SYSTEM DESIGNED TO WORK **FOR YOU**



**BOAT LIFTS**

**PWC LIFTS**

**PONTOON LIFTS**



\* While Supplies Last

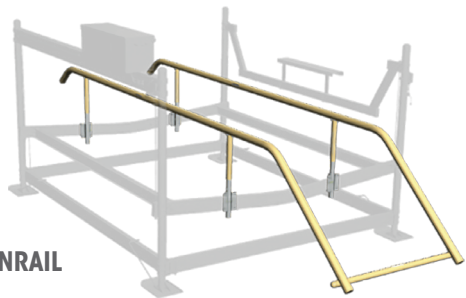
\*\* Ask About Our Pre Owned Inventory Options

## MAKE THE MOST OF YOUR SUMMER MOMENTS WITH SHORESTATION BOAT LIFTS.

Canopy systems and Accessories in stock and pricing available upon request. Please call for pricing and options.



**HYDRAULIC LIFT**



**TOONRAIL**

ShoreStation's solar-powered systems harness the sun's energy to power your boat lift, making your lift more cost-effective, efficient and maintenance-free.



### STOCKING BOAT AND PONTOON LIFT MODELS AT WOODARD MARINE

All Lift Prices Below include Solar Power Panel, Battery, Hydraulic Pump, Bunk Support System for Boat, Standard Leg. Depth, Pick up @ Woodard Marine (Pick Up on Pallet, unbuilt due to width restriction on road being over 10' wide)

LIFT CAPACITY* <small>* Total Weight Boat, Passenger, Fuel, Ballast</small>	INSIDE WIDTH	RUNABOUT / SURF BOAT STANDARD DEPTH*	PONTOON/TRITOON STANDARD DEPTH	ENTRY, CENTER, FRONT POST GUIDE ON SYSTEM <small>(NA On Pontoon Lift)</small>	LEGACY CANOPY SYSTEM
<b>4,000 lb. HYDRAULIC</b>	120"	\$14,065	\$15,010	\$1,090	26' System \$5,777
<b>5,000 lb. HYDRAULIC</b>	120"	\$18,010	\$18,855	\$1,090	26' or 30' available
<b>7,000 lb. HYDRAULIC</b>	120"	\$27,620	\$28,425	\$1,090	30' Option \$6,944

- ✓ Delivery, Build and Install Lake Bomoseen \$ 1,985 (3rd party company estimate)
- ✓ Delivery , Build and Install Lake Bomoseen **W/ Canopy** \$ 2,985 (3rd party company estimate)
- ✓ Delivery, Travel, Build and Install Lake St Catherine \$ 2,100 (3rd party company estimate)
- ✓ Delivery , Travel, Build and Install Lake St Catherine **W/ Canopy** \$3,100 (3rd party company estimate)
- ✓ \*Do Not See your Lake? Please Inquire for custom Installation options
- ✓ Limited quantity in stock new 4000lb manual wheel crack lift starting at \$9,997\* based on runabout style boat, plus build, install and delivery

- ✓ In Stock Canopy Color Options: Northwood Green & Slate Gray
- ✓ Custom Order Options: Dark Blue & Sand

\* Standard Depth - Minimum Water Depth 11" , Maximum Water Depth 7' for standard depth legs (Deep Water Legs Available for \$1,543





**DESIGNED TO HANDLE SOME OF TODAY'S LARGEST PERSONAL WATERCRAFT AVAILABLE, OUR LIFTS SUPPORT CRAFTS UP TO 1,500 LBS. GET ON AND OFF THE WATER QUICKLY AND SAFELY.**

**#1 SHORESTATION VERTICAL HYDRAULIC SOLAR POWERED LIFT**

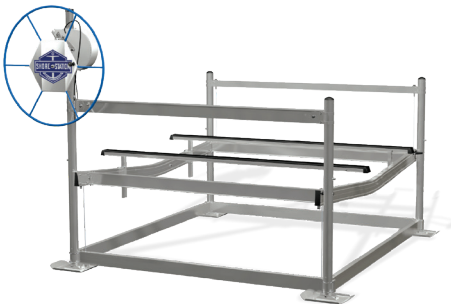


Our vertical lift design can handle deeper water and your largest Personal Watercraft – up to 5'6" water depth and 1,500 lb. capacity.

- NEW! Now available with ShoreStation's legendary Solar powered Hydraulic lift system
- Comes standard with 2 wireless remote controls for effortless lifting
- "V" cradle design for shallow water operation
- Self-adjusting pivoting UltraBunks safely cradle watercraft's hull
- Hydraulic Solar Powered System

**\$9,997** + delivery and tax

**#2 SHOREMASTER VERTICAL MANUAL WHEEL LIFT**



Our vertical lift design can handle deeper water and your largest Personal Watercraft – up to 5'6" water depth and 1,500 lb. capacity.

- Manual Crank Wheel and oversized frame to meet your heavy duty needs

**\$4,997** + delivery and tax

**#3 LAKESHORE PRODUCTS CANTILEVER MANUAL WHEEL DRIVE**



This aluminum constructed cantilever style PWC lift can handle watercrafts up to 1,000 lb.

- 30" operator's wheel and brake winch provides safe, smooth operation
- Heavy-duty aluminum frame and posts for larger watercrafts
- Self-adjusting pivoting UltraBunks cradle watercraft's hull
- Also available with 4 legs for deeper water or optional canopy
- Shallow water applications only up to 36" max water depth

**\$2,500** + delivery and tax



**OTHER LIFT MODELS AVAILABLE IN HYDRAULIC, ELECTRIC AND MANUAL**

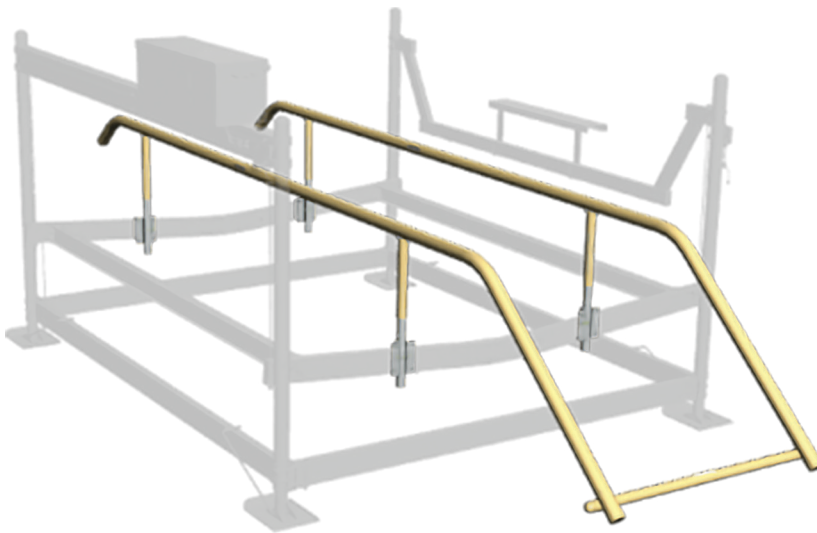
\* price on PWC lift includes build an assembly and pick up at Woodard Marine





# PONTOON LIFTS

**UPDATED TO FIT TODAY'S LARGER AND HEAVIER PONTOONS. OFFERING GREATER SUPPORT WITH THREE CRADLE OPTIONS TO CHOOSE FROM. AVAILABLE IN 4,000LB TO 7,000LB CAPACITY VERTICAL LIFTS.**



## TOONRAIL

The 3-in-1 under-deck lift support with integrated motor stop and load guides is economical and maintenance free. The contoured poly-covered tubes both guide the pontoon into the lift and support it by simply lifting under the deck inside the outer tubes.

Canopy systems in stock and pricing available upon request.



**LIFTS ARE AVAILABLE IN HYDRAULIC AND MANUAL**

See page 13 for pricing





**FREE CURBSIDE DRIVEWAY DELIVERY**  
OUR TRUCKS DELIVER CURBSIDE\* TO YOUR SITE

**CASH AND CARRY DISCOUNT**  
BASED ON IN STOCK INVENTORY PAY CASH OR CHECK WITHIN 7 DAYS OF ORDER & RECEIVE 5% OFF ORDER

Pre tax or installation. \*WM will keep your purchase on site until you are ready within 30 days of payment of purchase at no charge.

MINIMUM PURCHASE AMOUNT <small>(Not including sales tax)</small>	FREE DELIVERY FROM 615 CREEK RD. HYDEVILLE, VT 05750 <small>(Distance based on Google Maps)</small>	DELIVERY CHARGE ONE WAY <small>(Over the free mile range)</small>
\$5,000	10 miles	Free
	Over 10+ miles	\$4.00 / mile

Delivery Limited to size of Up to 1 truck/ trailer load per order, additional loads are subject to delivery charge. Deliveries are scheduled for Tuesday each week, between 10am - 3pm, please schedule delivery date. Delivery is for Shoremaster Dock system only, other services and Boat lifts are subject to delivery and installation fees.

**WATERFRONT INSTALLATION SPECIALISTS**

- BEAYON WATER FRONT SERVICES**
- ✓ Lake Bomoseen and Lake St Catherine
  - ✓ Shorestation and Shoremaster Certified
  - ✓ 802-273-2034 (Paula and Clarence)

- VERMONT WATERFRONT SPECIALISTS**
- ✓ Lake Hortonia
  - ✓ Lake Dunmore
  - ✓ Lake Rescue
  - ✓ Lake Bomoseen and Lake St Catherine
  - ✓ Inquire about other Lakes
  - ✓ Leon 518-361-5437
  - ✓ VERMONTWATERFRONTSERVICES@GMAIL.COM

\*\* Woodard Marine is not owned or operated by any installation entities. Any communication or installation time frames are to be discussed directly with the installation company and homeowner. We are not able to communicate or promise installation dates or pricing on behalf of the homeowner with the installation companies

**\* Free Curbside Delivery Terms & Conditions:** 1. Curbside delivery definition: We will back up as close as we can with our vehicle to your installation site and off-load your product. We cannot carry your product further than the side/rear of our truck/trailer, Our delivery vehicles cannot go off of driveway surfaces (ie on grass, etc.). 2. Free delivery available on in stock Products only. Please see chart above for minimum purchase amounts to qualify for free delivery. Free delivery does not apply to Boat Lift or any other woodard marine services and cannot be combined. 3. Boat Lifts, canopies & accessories – delivery, build, and installation prices apply to all boat lift products. 4. If you want your product installed, please inquire on rates for this service – free delivery does not apply. 5. Assembly is not included in any delivery, bulk product supplied. 6. Purchases under \$5,000 are subject to a \$4.00 per mile one way charge from Woodard Marine VT. A ground shipping method/charge by another source such as Common Carrier or UPS may be more feasible depending on product purchased. 7. \*\*Due to regulations for hourly driving restrictions by the Federal Motor Carrier there may be an additional fee applicable to deliveries 200 miles or over for overnight charges.